

# ONYX 24



**HOUSE PRICE \$310,600**

**LAND PRICE \$403,600**

**HOUSE & LAND PACKAGE \$714,200**

**Lot size 328.4m<sup>2</sup> (11.35m x 28.9m)**

The Onyx design takes family living to a new level with an integrated kitchen, family and dining room that flows through to a spacious alfresco area. The upstairs lounge nestled amongst the bedrooms is the perfect space to relax and unwind.

**Evoque Inclusions:**

- Urban facade

**Lot 27  
56 Byron Road,  
LEPPINGTON**

**4      2      2**  
bed      bath      car

**24.22 SQ**

Suits standard lot 9.4m x 26.0m

Living	80.42 m <sup>2</sup>
Garage	34.62 m <sup>2</sup>
Porch	4.56 m <sup>2</sup>
Alfresco	9.14 m <sup>2</sup>
Total	224.98 m <sup>2</sup>
Overall Width	8.4 m
Overall Length	17.2 m

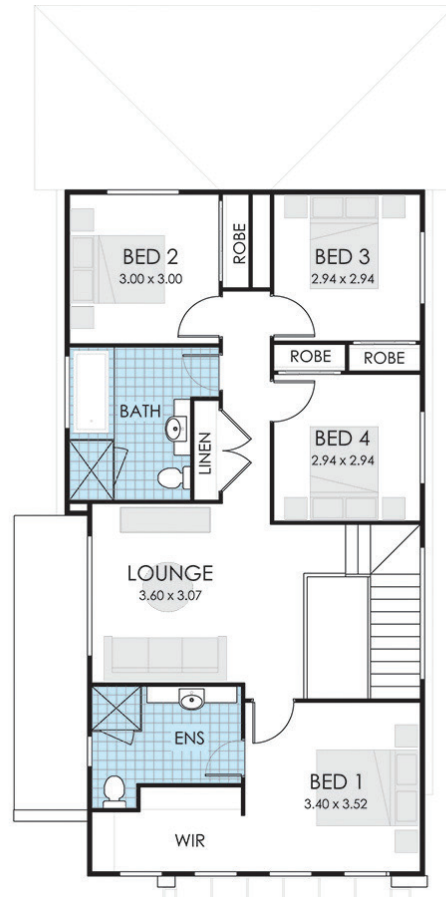
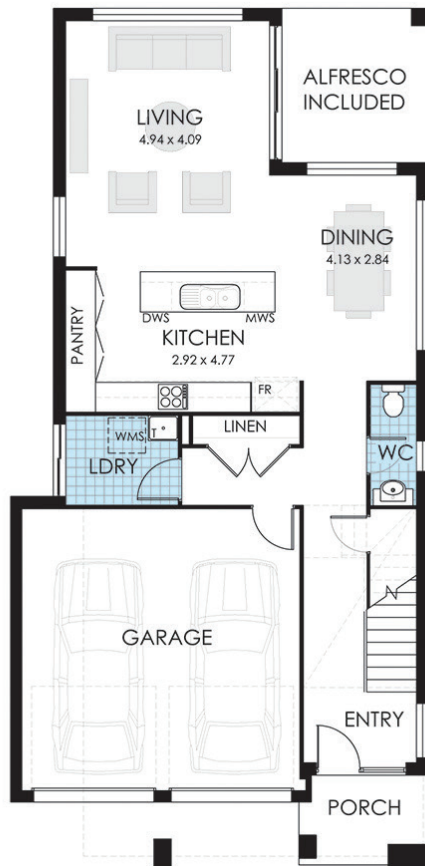
**Thrive**  
Homes

1300 921 383  
hello@thrivehomes.com.au  
thrivehomes.com.au

**BUILD  
SMART**

# ONYX 24

Lot 27, 56 Byron Road Estate, LEPPINGTON NSW 2179



Suits standard lot 9.4m x 26.0m

Living	80.42 m <sup>2</sup>
Garage	34.62 m <sup>2</sup>
Porch	4.56 m <sup>2</sup>
Alfresco	9.14 m <sup>2</sup>
Total	224.98 m <sup>2</sup>
Overall Width	8.4 m
Overall Length	17.2 m